

表面絕緣電阻量測系統 (SIR-2006B-250V)
Surface Insulation Resistance Measurement System



表面絕緣電阻量測系統 (SIR-2006B-250V) Surface Insulation Resistance Measurement System

Advanced Technology 科技創新技術



全程偵測遷移狀況

完整偵測各軌發生遷移狀況. 不間斷持續監控
Completely detecting of migration in each track, available with uninterruptedly continuous monitoring



各層設定不同測定條件

各層彈性設定 (群組 & 時間 & 電流保護 & 洩漏電流偵測點... 等)

Flexible setting for each layer (group, time, current protection and detection point of current leakage, etc.)



超大擴充200channels

超值標配40channels 超大擴充可到200channels
Value-added standard configuration of 40 channels, expandable to 200 channels



數據即時曲線化顯示

即時讀取時間 / 電阻值 / 溫度 / 濕度之讀值

Real-time reading of time, resistance value, temperature and Humidity

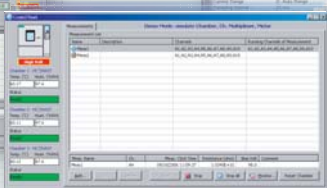


軌道程式設定畫面
Setting screen for channel program

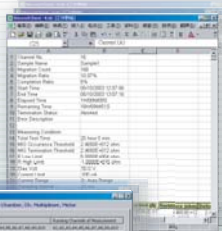
轉換EXCEL報表
Conversion to Excel report



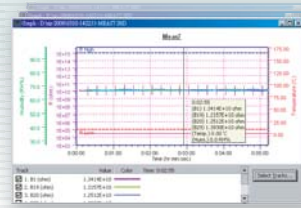
多軌量測結果同步顯示畫面
Simultaneous display of multi-channel measuring results



SIR系統控制主畫面
Main scene of SIR system control

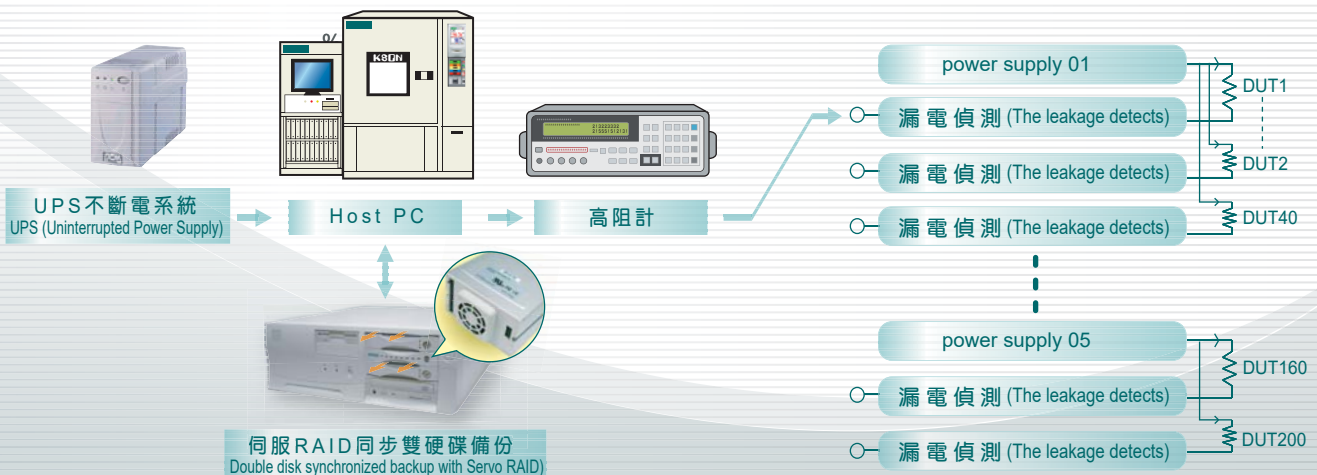


(新架構)
高速洩漏電流偵測
應用範圍:
離子遷移、CAF
(New infrastructure)
High-speed detection of current leakage
Applicable scope - ion migration - CAF



正常絕緣電阻紀錄
應用範圍 - 絕緣電阻
Recording of normal insulation
Applicable scope - insulation resistance resistance

© SIR系統架構圖 (SIR system architecture diagram)



表面絕緣電阻量測系統規格表 Surface Insulation Resistance Measurement System Specification

規 格 Specification		表面絕緣電阻量測系統 (SIR-2006B-250V) Surface Insulation Resistance Measurement System(SIR-2006B)
外型尺寸 Exterior Dimension		600 × 1731 × 850 mm (W*H*D)(包含突出部份)
電氣特性 (Electrical Properties)	標準軌道 Standard Channel	40Channels(最大 200 Channels)
	最大控制 Maximum Control Group	5 Group
	試驗設定 Test Setting	群組設定 Group Setting (START / STOP)
	測定電壓範圍 Measurement Voltage Scope	0.5V~ 250V(0.5~200V/0.1Step , 200V以上/1V Step)
	電阻量測範圍 Resistance Measurement Range	$1 \times 10^6 \Omega \sim 1 \times 10^{13} \Omega$
	洩漏電流測定範圍 Measurement Scope Of Leakage Current	10pA~500uA
	洩漏電流測定速度 Measurement Rate Of Leakage Current	1us
	資料取樣速度 Data Sample Rate	1 Sec/Channel
	Bias Supply 方式 Bias Supply Mode	1 Power Supply → 40 CH (群組設定啟動) 1 Power Supply → 40 CH(Group Setting Startup) 若任1CH短路時, Alarm顯示, 其他CH繼續執行試驗 If Any One Channel Is In Short Circuit, Alarm Displayed, While Other Channels Continue Testing.
	電壓設定 VOLTage Setting	Bias & Test 電 壓 → 40 CH (Bias正負電壓/test正電壓設定) Bias & Test Voltage → 40 CH(Setting Of Bias Positive & Negative Voltage Test/positive Voltage Setting)
最大試驗時間 Maximum Test Time	9999hr	
T/H Measurement (Temperature & Humidity Measurement)	資料讀取&Link台數 Data Reading & Link Number Of Machines	同時讀取/記錄各Chamber溫濕度值/最大3台Chamber Simultaneously Read/record The Maximum T/H Values Of Each Chamber/maximum Three Chambers
	測試時間調整 Adjustment of test time	測試時間運轉中延長/縮短(1min ~ 9999hr 任意調整) Test Time Can Be Adjusted From 1min - 9999hr During The Test Process
量測線材 (Measurement Wire)	Bias Cable斷線檢出功能 Bias Cable Breakage Detection	斷線&短路檢出(量測資料經由程式判斷) Breakage & short circuit detection (the measured data is judged by the program)
	Cable線材 Cable Wire	同軸鐵弗龍披覆純銀導線 Coaxial Teflon-Coated Pure Silver Conduit
資料收錄 (Data Collection)	收錄資料應用 Application Of Collection Data	16種應用資訊 16 Types Of Application Information
	離子遷移資料分析 Analysis Of Ion Migration Data	記錄遷移 發生/ 結束時間 Recording Of The Occurrence/End Time Of Migration
	EXCEL報表轉換 Excel Report Conversion	設定條件資料、量測資料、遷移資料完整轉換成EXCEL檔案 Set Condition Data, Measurement Data And Migration Data To Be Completely Converted As Excel Files
電 源 Power Source		AC110V&220V ± 10% , 50/60Hz
環境溫度 Environmental Temperature		+5℃~+30℃
標 配 Standard Equipments		量測探棒、量測夾具、PCB放置治具、驗證用比對電阻(5種不同電阻值1MΩ ~ 10GΩ) Measurement Probe And Alligator Clip, PCB Fixture And Five Kinds of Resistances Values Of 1MΩ -10GΩ For Comparison And Verification

※以上規格, 請以實體為主(For Above Accessories, Their Actual Specifications May Vary)

標準電腦配備 Computer To Be Equipped (IBM 相容個人電腦)

- C P U : Intel雙核心以上
- R A M : 1GB 記憶體以上(1GB of memory or more)
- H a r d D I S K : 2個80GB硬碟以上(Two Hard Disks With The Capacity of 80GB Or More)
- 作業系統(OS) : Win單機版以上 (At least Windows)
- 顯示器(Monitor) : 17吋TFT螢幕(17" TFT LCD)
- 網 路 卡(NIC) : 10/100M
- 燒錄器(Burner) : DVD 燒錄機
- 資料保護(Data Protection) : 伺服器RAID架構磁碟陣列雙硬碟資料同步備份(Sever Raid Dual Hard Disk Data Synchronized Backup)
- U P S : 不斷電系統可持續30分鐘以上(UPS can sustain for at least 30 minutes)

www.kson.com.tw

慶聲科技股份有限公司

台北 新北市新莊區新樹路387巷2號

TEL : (02)2208-4002

FAX : (02)2208-3491

E-mail : sales@kson.com.tw

新竹 TEL : (037)634-208

E-mail : sales@kson.com.tw

營業項目-

恆溫恆濕機(標準型/積架型/三機一體/桌上型/超低濕/太陽能專用/等溫/藥品安定性/步入式)/冷熱衝擊機(三箱氣體式/兩箱移動式)/熱應力複合機(快速溫變試驗機)/高度加速壽命試驗機(HAST)/應力篩選試驗機/複合型環境試驗機(三綜合)/自然對流試驗機(無風烤箱)/鋰電池專用試驗機/太陽能量測系統/離子遷移量測系統(SIR/CAF)/e化遠端管理系統/VMR多功能導通電阻量測分析系統/智慧型高阻計