

高度加速壽命試驗機 (HAST-S)  
Highly Accelerated Stress Tester (HAST-S)



# Advanced Technology. Key Value. Convenience Safe... 科技創新技術. 核心價值. 即時安全設計...



## Laboratory Class

智慧型排氣設計(鍋爐內空氣抽出) 提高壓力穩定性、再現性

The Intelligent Exhaust Design (Air Within The Boiler Is Extracted) To Enhance Pressure Stability And Reproduction



## 超長效實驗運轉時間

長時間實驗機台運轉400小時

The Long-lasting Experiment Machine Can Operate For As Long As 400 Hours



## 創新 USB 2.0 儲存介面

內建USB 2.0數位記錄器儲存介面

Built-in Storage Interface Of USB 2.0 Drive For Digital Recorder



## Tank 耐壓設計

箱體耐壓力(140°C)3.65kg (含一大氣壓)

The Chamber Pressure Resistance Is (140°C)3.65kg (Including 1 Atm)



## 二段式壓力安全保護裝置

採兩段式結合控制器與機械式壓力保護裝置

Using A Two-stage Pattern To Combine The Controller And The Mechanical Pressure Protection Device

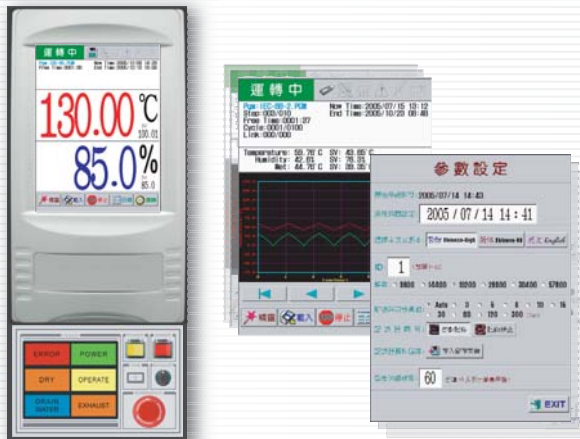


## 安全保護排壓鈕

緊急安全裝置二段式自動排壓鈕

A Two-stage Automatic Pressure-drain Button Is Used For The Emergency Security Device

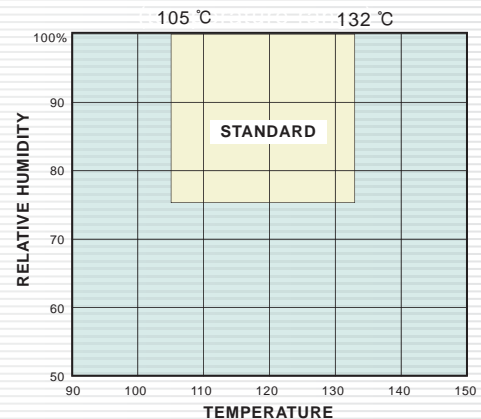
Touch Panel 全彩觸控式控制器



▲ 程式設定 150 組、即時曲線、多種語系操作 ▲

150 Program Settings, Instant Curves And Multiple Language Operation

溫濕度可控制能力範圍表  
(Temperature Range)



## ◎規格表(Specification Table)

規格(Specification)	HAST-S	規格(Specification)	HAST-S
內箱尺寸(Inside Dimensions(W · D · H)cm)	Φ 22 X 33(L) (cm)	溫度範圍(Temperature Range)	105°C ~ 132°C
外箱尺寸(Outside Dimensions(W · D · H)cm)	65 X 90 X 63 (W*D*H)	濕度範圍(Humidity Range)	75%~100% / 105 °C~132 °C
內容積(Inside Capacity) / 公升(Litre)	12L	溫度分佈均勻度(Temperature Uniformity °C)	± 1.0 °C
外箱材料(External Material)	SECC	濕度分佈均勻度(Humidity Uniformity %R.H)	± 5 %
內箱材料(Internal Material)	不銹鋼#316	溫度穩定度(Temperature Stability °C)	± 0.3 °C
主要裝置(Major Device)		壓力範圍(Pressure Range)	1.2~2.89kg(含1 atm)
結構 (Structure)	標準壓力容器(Standard Pressure Vessel)	控制器(Controller)	IPC Baced Touch Panel
加濕系統(Humidification System)	電熱管(Electric Pip Heaters)	程式庫編輯(Program Library Editing)	150組程式
加濕給水系統(Humidification Wster Supply)	手動加水	電壓(V)	220V~240V 50/60Hz單相

◎ 標配附件 (Standard Accessories): 測試盤x2、測試架x1 (Testing Platex2、Testing Framex1)

◎ 選擇附件 (Optional Accessories): 純銀導線4 PIN (Pure Silver Conduct 4 PIN)

◎ 以上規格，請以實體為主 (For Above Accessories, their Actual Specifications May Vary)